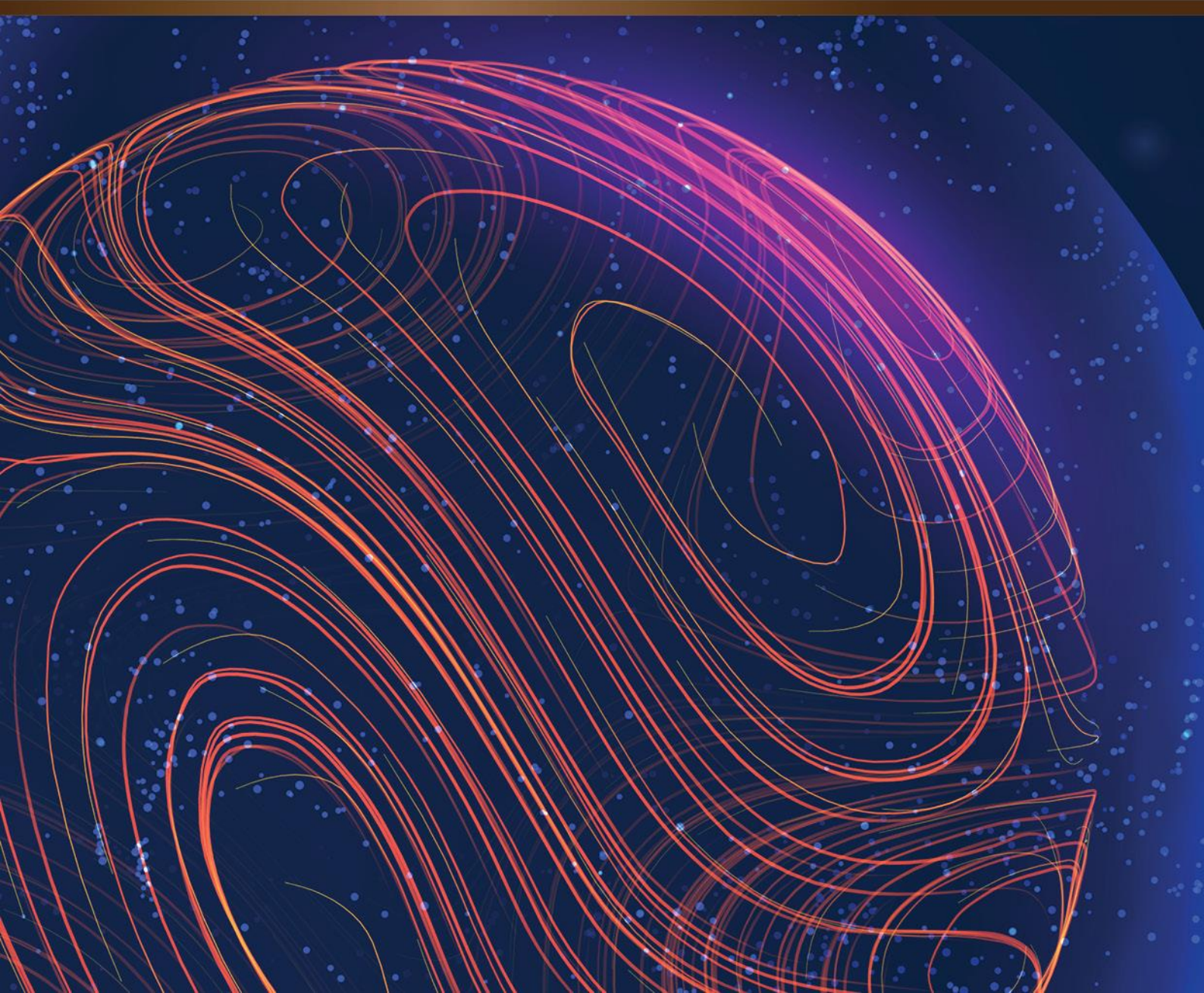


# Global Custody Network for Luxembourg





SECURITIES SERVICES

## Global Custody Network

J.P. Morgan SE – Luxembourg Branch



The following contains details of J.P. Morgan's Securities Services global network of subcustodians, International Central Securities Depositories (ICSDs) and Cash Correspondents (Securities Related Activity) who contract with **J.P. Morgan SE – Luxembourg Branch** (JPMSE Lux)

### Markets Covered

<a href="#">Argentina</a>	<a href="#">Iceland</a>	<a href="#">Portugal</a>
<a href="#">Australia</a>	<a href="#">India</a>	<a href="#">Qatar</a>
<a href="#">Austria</a>	<a href="#">Indonesia</a>	<a href="#">Romania</a>
<a href="#">Bahrain</a>	<a href="#">Ireland</a>	<a href="#">Russia</a>
<a href="#">Bangladesh</a>	<a href="#">Israel</a>	<a href="#">Saudi Arabia</a>
<a href="#">Belgium</a>	<a href="#">Italy</a>	<a href="#">Serbia</a>
<a href="#">Bermuda</a>	<a href="#">Japan</a>	<a href="#">Singapore</a>
<a href="#">Botswana</a>	<a href="#">Jordan</a>	<a href="#">Slovak Republic</a>
<a href="#">Brazil</a>	<a href="#">Kazakhstan</a>	<a href="#">Slovenia</a>
<a href="#">Bulgaria</a>	<a href="#">Kenya</a>	<a href="#">South Africa</a>
<a href="#">Canada</a>	<a href="#">Kuwait</a>	<a href="#">South Korea</a>
<a href="#">Chile</a>	<a href="#">Latvia</a>	<a href="#">Spain</a>
<a href="#">China A-Share</a>	<a href="#">Lithuania</a>	<a href="#">Sri Lanka</a>
<a href="#">China B-Share</a>	<a href="#">Luxembourg</a>	<a href="#">Sweden</a>
<a href="#">China Connect</a>	<a href="#">Malawi</a>	<a href="#">Switzerland</a>
<a href="#">Colombia</a>	<a href="#">Malaysia</a>	<a href="#">Taiwan</a>
<a href="#">Costa Rica</a>	<a href="#">Mauritius</a>	<a href="#">Tanzania</a>
<a href="#">Croatia</a>	<a href="#">Mexico</a>	<a href="#">Thailand</a>
<a href="#">Cyprus</a>	<a href="#">Morocco</a>	<a href="#">Tunisia</a>
<a href="#">Czech Republic</a>	<a href="#">Namibia</a>	<a href="#">Turkey</a>
<a href="#">Denmark</a>	<a href="#">Netherlands</a>	<a href="#">Uganda</a>
<a href="#">Egypt</a>	<a href="#">New Zealand</a>	<a href="#">Ukraine</a>
<a href="#">Estonia</a>	<a href="#">Nigeria</a>	<a href="#">United Arab Emirates</a>
<a href="#">Finland</a>	<a href="#">Norway</a>	<a href="#">United Kingdom</a>
<a href="#">France</a>	<a href="#">Oman</a>	<a href="#">United States</a>
<a href="#">Georgia</a>	<a href="#">Pakistan</a>	<a href="#">Uruguay</a>
<a href="#">Germany</a>	<a href="#">Panama</a>	<a href="#">Vietnam</a>
<a href="#">Ghana</a>	<a href="#">Peru</a>	<a href="#">WAEMU</a>
<a href="#">Greece</a>	<a href="#">Philippines</a>	<a href="#">Zambia</a>
<a href="#">Hong Kong</a>	<a href="#">Poland</a>	<a href="#">Zimbabwe</a>
<a href="#">Hungary</a>		

### International Central Securities Depositories

[Clearstream](#)

[Euroclear](#)

## Argentina

Market Added **1986****Service Provider**

HSBC Bank Argentina S.A.

**Service Provider Since**

2003

**JPMSE Lux Contracts With**

The Hongkong and Shanghai Banking Corporation Limited

**Cash Correspondent (Securities Related Activity)**

HSBC Bank Argentina S.A.

## Australia

Market Added **1974****Service Provider**

JPMorgan Chase Bank, N.A. - Sydney Branch\*

**Service Provider Since**

1989

**JPMSE Lux Contracts With**

JPMorgan Chase Bank, N.A. - Sydney Branch\*

**Cash Correspondent (Securities Related Activity)**

Australia and New Zealand Banking Group Ltd.

JPMorgan Chase Bank N.A. - Sydney Branch\* *(for clients utilizing J.P. Morgan's domestic AUD solution)*

## Austria

Market Added **1986****Service Provider**

UniCredit Bank Austria AG

**Service Provider Since**

1986

**JPMSE Lux Contracts With**

UniCredit Bank Austria AG

**Cash Correspondent (Securities Related Activity)**

J.P. Morgan SE\*

## Bahrain

Market Added **1996****Service Provider**

HSBC Bank Middle East Limited (Bahrain Branch)

**Service Provider Since**

1996

**JPMSE Lux Contracts With**

The Hongkong and Shanghai Banking Corporation Limited

**Cash Correspondent (Securities Related Activity)**

HSBC Bank Middle East Limited (Bahrain Branch)

\*J.P. MORGAN AFFILIATE

† CLIENTS SHOULD REFER TO THEIR ISSUED SETTLEMENT INSTRUCTIONS

CASH CORRESPONDENT (SECURITIES RELATED ACTIVITY) ARE LISTED FOR INFORMATION ONLY

## Bangladesh

Market Added **1993**

### Service Provider

Standard Chartered Bank (Bangladesh Branch)

### Service Provider Since

1993

### JPMSE Lux Contracts With

Standard Chartered Bank (Bangladesh Branch)

### Cash Correspondent (Securities Related Activity)

Standard Chartered Bank (Bangladesh Branch)

## Belgium

Market Added **1974**

### Service Provider

BNP Paribas SA

Direct participant of the CSD

### Service Provider Since

2011

N/A

### JPMSE Lux Contracts With

BNP Paribas SA *(for Belgian Bonds settling in the National Bank of Belgium)*JPMSE Lux\* is a direct participant of the CSD *(accounts are operated through BNP Paribas SA)*

### Cash Correspondent (Securities Related Activity)

J.P. Morgan SE\*

## Bermuda

Market Added **1997**

### Service Provider

HSBC Bank Bermuda Limited

### Service Provider Since

1997

### JPMSE Lux Contracts With

The Hongkong and Shanghai Banking Corporation Limited

### Cash Correspondent (Securities Related Activity)

HSBC Bank Bermuda Limited

## Botswana

Market Added **1993**

### Service Provider

Standard Chartered Bank Botswana Limited

### Service Provider Since

2010

### JPMSE Lux Contracts With

Standard Chartered Bank

### Cash Correspondent (Securities Related Activity)

Standard Chartered Bank Botswana Limited

\*J.P. MORGAN AFFILIATE

† CLIENTS SHOULD REFER TO THEIR ISSUED SETTLEMENT INSTRUCTIONS

CASH CORRESPONDENT (SECURITIES RELATED ACTIVITY) ARE LISTED FOR INFORMATION ONLY

## Brazil

Market Added **1988****Service Provider**

J.P. Morgan S.A. Distribuidora de Titulos e Valores Mobiliarios\*

**Service Provider Since**

2011

**JPMSE Lux Contracts With**

JPMorgan Chase Bank, National Association\* (which in turn appoints J.P. Morgan S.A. Distribuidora de Titulos e Valores Mobiliarios\*)

**Cash Correspondent (Securities Related Activity)**

Banco J.P. Morgan S.A.\*

## Bulgaria

Market Added **1997****Service Provider**

Citibank Europe plc, Bulgaria Branch

**Service Provider Since**

2014

**JPMSE Lux Contracts With**

Citibank Europe plc, Bulgaria Branch

**Cash Correspondent (Securities Related Activity)**

ING Bank N.V., Sofia Branch

## Canada

Market Added **1974****Service Provider**Royal Bank of Canada<sup>†</sup>CIBC Mellon Trust Company<sup>†</sup>**Service Provider Since**

1979

1994

**JPMSE Lux Contracts With**Royal Bank of Canada<sup>†</sup>CIBC Mellon Trust Company<sup>†</sup>**Cash Correspondent (Securities Related Activity)**

Royal Bank of Canada

Canadian Imperial Bank of Commerce (For clients utilizing J.P. Morgan's domestic CAD solution)

## Chile

Market Added **1988****Service Provider**

Banco Santander Chile

**Service Provider Since**

2009

**JPMSE Lux Contracts With**

Banco Santander Chile

**Cash Correspondent (Securities Related Activity)**

Banco Santander Chile

\*J.P. MORGAN AFFILIATE

† CLIENTS SHOULD REFER TO THEIR ISSUED SETTLEMENT INSTRUCTIONS

CASH CORRESPONDENT (SECURITIES RELATED ACTIVITY) ARE LISTED FOR INFORMATION ONLY

## China A-Share

Market Added **1993**
**Service Provider**

HSBC Bank (China) Company Limited

**Service Provider Since**

2002

**JPMSE Lux Contracts With**

The Hongkong and Shanghai Banking Corporation Limited

**Cash Correspondent (Securities Related Activity)**

HSBC Bank (China) Company Limited

## China B-Share

Market Added **1993**
**Service Provider**

HSBC Bank (China) Company Limited

**Service Provider Since**

1993

**JPMSE Lux Contracts With**

The Hongkong and Shanghai Banking Corporation Limited

**Cash Correspondent (Securities Related Activity)**
JPMorgan Chase Bank, N.A. - Hong Kong Branch\* (*Shenzhen - HKD*)JPMorgan Chase Bank, National Association\* (*Shanghai - USD*)

## China Connect

Market Added **2014**
**Service Provider**

JPMorgan Chase Bank, N.A. - Hong Kong Branch\*

**Service Provider Since**

2014

**JPMSE Lux Contracts With**

JPMorgan Chase Bank, N.A. - Hong Kong Branch\*

**Cash Correspondent (Securities Related Activity)**

JPMorgan Chase Bank, N.A. - Hong Kong Branch\*

## Colombia

Market Added **1992**
**Service Provider**

Cititrust Colombia S.A. Sociedad Fiduciaria

**Service Provider Since**

2015

**JPMSE Lux Contracts With**

Cititrust Colombia S.A. Sociedad Fiduciaria

**Cash Correspondent (Securities Related Activity)**

Citibank Colombia SA

\*J.P. MORGAN AFFILIATE

† CLIENTS SHOULD REFER TO THEIR ISSUED SETTLEMENT INSTRUCTIONS

CASH CORRESPONDENT (SECURITIES RELATED ACTIVITY) ARE LISTED FOR INFORMATION ONLY

## Costa Rica

Market Added **2011****Service Provider**

Banco BCT S.A.

**Service Provider Since**

2011

**JPMSE Lux Contracts With**

Banco BCT S.A.

**Cash Correspondent (Securities Related Activity)**

Banco BCT S.A.

## Croatia

Market Added **1997****Service Provider**

Privredna banka Zagreb d.d.

**Service Provider Since**

1997

**JPMSE Lux Contracts With**

Privredna banka Zagreb d.d.

**Cash Correspondent (Securities Related Activity)**

Zagrebacka banka d.d.

## Cyprus

Market Added **1996****Service Provider**

BNP Paribas S.A. Athens Branch

**Service Provider Since**

2023

**JPMSE Lux Contracts With**

BNP Paribas S.A. Athens Branch

**Cash Correspondent (Securities Related Activity)**

J.P. Morgan SE\*

## Czech Republic

Market Added **1994****Service Provider**

UniCredit Bank Czech Republic and Slovakia, a.s.

**Service Provider Since**

2003

**JPMSE Lux Contracts With**

UniCredit Bank Czech Republic and Slovakia, a.s.

**Cash Correspondent (Securities Related Activity)**

Ceskoslovenská obchodní banka a.s.

\*J.P. MORGAN AFFILIATE

† CLIENTS SHOULD REFER TO THEIR ISSUED SETTLEMENT INSTRUCTIONS

CASH CORRESPONDENT (SECURITIES RELATED ACTIVITY) ARE LISTED FOR INFORMATION ONLY



## Denmark

Market Added **1980****Service Provider**

Direct participant of the CSD

**Service Provider Since**

N/A

**JPMSE Lux Contracts With**

JPMSE Lux\* is a direct participant of the CSD

**Cash Correspondent (Securities Related Activity)**

Nordea Bank Abp

## Egypt

Market Added **1994****Service Provider**

Citibank N.A., Egypt

**Service Provider Since**

1995

**JPMSE Lux Contracts With**

Citibank N.A., Egypt

**Cash Correspondent (Securities Related Activity)**

Citibank N.A., Egypt

## Estonia

Market Added **1996****Service Provider**

Clearstream Banking S.A.

**Service Provider Since**

2019

**JPMSE Lux Contracts With**

JPMorgan Chase Bank, National Association\* (which in turn appoints Clearstream Banking S.A. in its capacity as ICSD; Clearstream Banking AG is a direct participant of the CSD)

**Cash Correspondent (Securities Related Activity)**

J.P. Morgan SE\*

## Finland

Market Added **1984****Service Provider**

Skandinaviska Enskilda Banken AB (publ) Helsingforsfilialen

**Service Provider Since**

2021

**JPMSE Lux Contracts With**

Skandinaviska Enskilda Banken AB (publ)

**Cash Correspondent (Securities Related Activity)**

J.P. Morgan SE\*

\*J.P. MORGAN AFFILIATE

† CLIENTS SHOULD REFER TO THEIR ISSUED SETTLEMENT INSTRUCTIONS

CASH CORRESPONDENT (SECURITIES RELATED ACTIVITY) ARE LISTED FOR INFORMATION ONLY

## France

Market Added **1977**
**Service Provider**

BNP Paribas SA

Direct participant of the CSD

**Service Provider Since**

1986

N/A

**JPMSE Lux Contracts With**
BNP Paribas SA *(for Physical Securities and Ordre De Mouvement held by Clients)*JPMSE Lux\* is a direct participant of the CSD *(accounts are operated through BNP Paribas SA)*
**Cash Correspondent (Securities Related Activity)**

J.P. Morgan SE\*

## Georgia

Market Added **2022**
**Service Provider**

JSC Bank of Georgia

**Service Provider Since**

2022

**JPMSE Lux Contracts With**

JSC Bank of Georgia

**Cash Correspondent (Securities Related Activity)**

JSC Bank of Georgia

## Germany

Market Added **1974**
**Service Provider**

Deutsche Bank AG

**Service Provider Since**

2004

**JPMSE Lux Contracts With**

Deutsche Bank AG

**Cash Correspondent (Securities Related Activity)**

J.P. Morgan SE\*

## Ghana

Market Added **1994**
**Service Provider**

Standard Chartered Bank Ghana PLC

**Service Provider Since**

2010

**JPMSE Lux Contracts With**

Standard Chartered Bank

**Cash Correspondent (Securities Related Activity)**

Standard Chartered Bank Ghana PLC

\*J.P. MORGAN AFFILIATE

† CLIENTS SHOULD REFER TO THEIR ISSUED SETTLEMENT INSTRUCTIONS

CASH CORRESPONDENT (SECURITIES RELATED ACTIVITY) ARE LISTED FOR INFORMATION ONLY

## Greece

Market Added **1988**
**Service Provider**

BNP Paribas S.A. Athens Branch

**Service Provider Since**

2023

**JPMSE Lux Contracts With**

BNP Paribas S.A. Athens Branch

**Cash Correspondent (Securities Related Activity)**

J.P. Morgan SE\*

## Hong Kong

Market Added **1974**
**Service Provider**

JPMorgan Chase Bank, N.A. - Hong Kong Branch\*

**Service Provider Since**

2012

**JPMSE Lux Contracts With**

JPMorgan Chase Bank, N.A. - Hong Kong Branch\*

**Cash Correspondent (Securities Related Activity)**

JPMorgan Chase Bank, N.A. - Hong Kong Branch\*

## Hungary

Market Added **1992**
**Service Provider**

Deutsche Bank AG - Hungary Branch

**Service Provider Since**

2006

**JPMSE Lux Contracts With**

Deutsche Bank AG - Hungary Branch

**Cash Correspondent (Securities Related Activity)**

Unicredit Bank Hungary Zrt.

## Iceland

Market Added **2001**
**Service Provider**

Islandsbanki hf.

**Service Provider Since**

2001

**JPMSE Lux Contracts With**

Islandsbanki hf.

**Cash Correspondent (Securities Related Activity)**

Islandsbanki hf.

\*J.P. MORGAN AFFILIATE

† CLIENTS SHOULD REFER TO THEIR ISSUED SETTLEMENT INSTRUCTIONS

CASH CORRESPONDENT (SECURITIES RELATED ACTIVITY) ARE LISTED FOR INFORMATION ONLY

## India

Market Added **1991****Service Provider**

JPMorgan Chase Bank, N.A. - Mumbai Branch\*

**Service Provider Since**

2009

**JPMSE Lux Contracts With**

JPMorgan Chase Bank, N.A. - Mumbai Branch\*

**Cash Correspondent (Securities Related Activity)**

JPMorgan Chase Bank, N.A. - Mumbai Branch\*

## Indonesia

Market Added **1989****Service Provider**

PT Bank HSBC Indonesia

**Service Provider Since**

2016

**JPMSE Lux Contracts With**

The Hongkong and Shanghai Banking Corporation Limited

**Cash Correspondent (Securities Related Activity)**

PT Bank HSBC Indonesia

## Ireland

Market Added **1983****Service Provider**

Direct participant of the CSD

**Service Provider Since**

N/A

**JPMSE Lux Contracts With**JPMorgan Chase Bank, National Association\* *(which is a direct participant of the CSD)***Cash Correspondent (Securities Related Activity)**

J.P. Morgan SE\*

## Israel

Market Added **1993****Service Provider**

Bank Leumi le-Israel B.M.

**Service Provider Since**

1993

**JPMSE Lux Contracts With**

Bank Leumi le-Israel B.M.

**Cash Correspondent (Securities Related Activity)**

Bank Leumi le-Israel B.M.

\*J.P. MORGAN AFFILIATE

† CLIENTS SHOULD REFER TO THEIR ISSUED SETTLEMENT INSTRUCTIONS

CASH CORRESPONDENT (SECURITIES RELATED ACTIVITY) ARE LISTED FOR INFORMATION ONLY

## Italy

Market Added **1979****Service Provider**

BNP Paribas SA, Succursale Italia

**Service Provider Since**

2010

**JPMSE Lux Contracts With**

BNP Paribas SA, Succursale Italia

**Cash Correspondent (Securities Related Activity)**

J.P. Morgan SE\*

## Japan

Market Added **1974****Service Provider**MUFG Bank, Ltd.<sup>†</sup>Mizuho Bank, Ltd.<sup>†</sup>**Service Provider Since**

1988

1996

**JPMSE Lux Contracts With**MUFG Bank, Ltd.<sup>†</sup>Mizuho Bank, Ltd.<sup>†</sup>**Cash Correspondent (Securities Related Activity)**

JPMorgan Chase Bank, N.A. - Tokyo Branch\*

## Jordan

Market Added **1988****Service Provider**

Bank of Jordan PLC

**Service Provider Since**

2023

**JPMSE Lux Contracts With**

Bank of Jordan PLC

**Cash Correspondent (Securities Related Activity)**

Bank of Jordan PLC

## Kazakhstan

Market Added **1998****Service Provider**

Citibank Kazakhstan Joint Stock Company

**Service Provider Since**

2014

**JPMSE Lux Contracts With**

J.P. Morgan SE\* (which in turn appoints Citibank Kazakhstan Joint Stock Company)

**Cash Correspondent (Securities Related Activity)**

Citibank Kazakhstan Joint Stock Company

\*J.P. MORGAN AFFILIATE

† CLIENTS SHOULD REFER TO THEIR ISSUED SETTLEMENT INSTRUCTIONS

CASH CORRESPONDENT (SECURITIES RELATED ACTIVITY) ARE LISTED FOR INFORMATION ONLY



## Kenya

Market Added **1994****Service Provider**

Standard Chartered Bank Kenya Limited

**Service Provider Since**

2010

**JPMSE Lux Contracts With**

Standard Chartered Bank

**Cash Correspondent (Securities Related Activity)**

Standard Chartered Bank Kenya Limited

## Kuwait

Market Added **2006****Service Provider**

HSBC Bank Middle East Limited (Kuwait Branch)

**Service Provider Since**

2006

**JPMSE Lux Contracts With**

The Hongkong and Shanghai Banking Corporation Limited

**Cash Correspondent (Securities Related Activity)**

HSBC Bank Middle East Limited (Kuwait Branch)

## Latvia

Market Added **1997****Service Provider**

Clearstream Banking S.A.

**Service Provider Since**

2019

**JPMSE Lux Contracts With**JPMorgan Chase Bank, National Association\* *(which in turn appoints Clearstream Banking S.A. in its capacity as ICSD; Clearstream Banking AG is a direct participant of the CSD)***Cash Correspondent (Securities Related Activity)**

J.P. Morgan SE\*

## Lithuania

Market Added **1997****Service Provider**

Clearstream Banking S.A.

**Service Provider Since**

2019

**JPMSE Lux Contracts With**JPMorgan Chase Bank, National Association\* *(which in turn appoints Clearstream Banking S.A. in its capacity as ICSD; Clearstream Banking AG is a direct participant of the CSD)***Cash Correspondent (Securities Related Activity)**

J.P. Morgan SE\*

\*J.P. MORGAN AFFILIATE

† CLIENTS SHOULD REFER TO THEIR ISSUED SETTLEMENT INSTRUCTIONS

CASH CORRESPONDENT (SECURITIES RELATED ACTIVITY) ARE LISTED FOR INFORMATION ONLY

## Luxembourg

Market Added **1984**
**Service Provider**

Clearstream Banking S.A.

**Service Provider Since**

2021

**JPMSE Lux Contracts With**

JPMorgan Chase Bank, National Association\* (which in turn appoints Clearstream Banking S.A. in its capacity as ICSD; Clearstream S.A. is a direct participant of the CSD)

**Cash Correspondent (Securities Related Activity)**

J.P. Morgan SE\*

## Malawi

Market Added **2011**
**Service Provider**

Standard Bank PLC

**Service Provider Since**

2011

**JPMSE Lux Contracts With**

The Standard Bank of South Africa Ltd.

**Cash Correspondent (Securities Related Activity)**

Standard Bank PLC

## Malaysia

Market Added **1986**
**Service Provider**

HSBC Bank Malaysia Berhad

**Service Provider Since**

1997

**JPMSE Lux Contracts With**

The Hongkong and Shanghai Banking Corporation Limited

**Cash Correspondent (Securities Related Activity)**

HSBC Bank Malaysia Berhad

## Mauritius

Market Added **1994**
**Service Provider**

The Hongkong and Shanghai Banking Corporation Limited – Mauritius Branch

**Service Provider Since**

1994

**JPMSE Lux Contracts With**

The Hongkong and Shanghai Banking Corporation Limited

**Cash Correspondent (Securities Related Activity)**

The Hongkong and Shanghai Banking Corporation Limited – Mauritius Branch

\*J.P. MORGAN AFFILIATE

† CLIENTS SHOULD REFER TO THEIR ISSUED SETTLEMENT INSTRUCTIONS

CASH CORRESPONDENT (SECURITIES RELATED ACTIVITY) ARE LISTED FOR INFORMATION ONLY

## Mexico

Market Added **1981****Service Provider**

Banco Nacional De Mexico, S.A. Integrante Del Grupo Financiero Banamex

**Service Provider Since**

1989

**JPMSE Lux Contracts With**

Banco Nacional De Mexico, S.A. Integrante Del Grupo Financiero Banamex

**Cash Correspondent (Securities Related Activity)**

Banco Santander (Mexico) S.A. Institucion de Banca Multiple, Grupo Financiero SM

## Morocco

Market Added **1993****Service Provider**

Société Générale Marocaine de Banques

**Service Provider Since**

2008

**JPMSE Lux Contracts With**

Societe Generale SA

**Cash Correspondent (Securities Related Activity)**

Attijariwafa Bank

## Namibia

Market Added **1996****Service Provider**

Standard Bank Namibia Limited

**Service Provider Since**

1996

**JPMSE Lux Contracts With**

The Standard Bank of South Africa Ltd.

**Cash Correspondent (Securities Related Activity)**

The Standard Bank of South Africa Ltd.

## Netherlands

Market Added **1974****Service Provider**

BNP Paribas SA

Direct participant of the CSD

**Service Provider Since**

2009

N/A

**JPMSE Lux Contracts With**

BNP Paribas SA

JPMSE Lux\* is a direct participant of the CSD (*accounts are operated through BNP Paribas SA*)**Cash Correspondent (Securities Related Activity)**

J.P. Morgan SE\*

\*J.P. MORGAN AFFILIATE

† CLIENTS SHOULD REFER TO THEIR ISSUED SETTLEMENT INSTRUCTIONS

CASH CORRESPONDENT (SECURITIES RELATED ACTIVITY) ARE LISTED FOR INFORMATION ONLY

## New Zealand

Market Added **1986**
**Service Provider**

JPMorgan Chase Bank, N.A. - New Zealand Branch\*

**Service Provider Since**

2011

**JPMSE Lux Contracts With**

JPMorgan Chase Bank, N.A. - New Zealand Branch\*

**Cash Correspondent (Securities Related Activity)**

ANZ Bank New Zealand Limited

JPMorgan Chase Bank, N.A. - New Zealand Branch\* *(for clients utilizing J.P. Morgan's domestic solution).*

## Nigeria

Market Added **1998**
**Service Provider**

Stanbic IBTC Bank Plc

**Service Provider Since**

1998

**JPMSE Lux Contracts With**

The Standard Bank of South Africa Ltd.

**Cash Correspondent (Securities Related Activity)**

Stanbic IBTC Bank Plc

## Norway

Market Added **1982**
**Service Provider**

Skandinaviska Enskilda Banken AB (publ) Oslofilialen

**Service Provider Since**

2021

**JPMSE Lux Contracts With**

Skandinaviska Enskilda Banken AB (publ)

**Cash Correspondent (Securities Related Activity)**

Nordea Bank Abp

## Oman

Market Added **1996**
**Service Provider**

Standard Chartered Bank - Oman Branch

**Service Provider Since**

2023

**JPMSE Lux Contracts With**

Standard Chartered Bank - Oman Branch

**Cash Correspondent (Securities Related Activity)**

HSBC Bank Oman SAOG

\*J.P. MORGAN AFFILIATE

† CLIENTS SHOULD REFER TO THEIR ISSUED SETTLEMENT INSTRUCTIONS

CASH CORRESPONDENT (SECURITIES RELATED ACTIVITY) ARE LISTED FOR INFORMATION ONLY

## Pakistan

Market Added **1991**
**Service Provider**

Standard Chartered Bank (Pakistan) Limited

**Service Provider Since**

1992

**JPMSE Lux Contracts With**

Standard Chartered Bank (Pakistan) Limited

**Cash Correspondent (Securities Related Activity)**

Standard Chartered Bank (Pakistan) Limited

## Panama

Market Added **2020**
**Service Provider**

Citibank, N.A. Panama Branch

**Service Provider Since**

2020

**JPMSE Lux Contracts With**

Citibank, N.A. Panama Branch

**Cash Correspondent (Securities Related Activity)**

Citibank, N.A. Panama Branch

## Peru

Market Added **1992**
**Service Provider**

Citibank del Perú S.A.

**Service Provider Since**

1992

**JPMSE Lux Contracts With**

Citibank del Perú S.A.

**Cash Correspondent (Securities Related Activity)**

Citibank del Perú S.A.

## Philippines

Market Added **1978**
**Service Provider**

The Hongkong and Shanghai Banking Corporation Limited – Philippine Branch

**Service Provider Since**

1986

**JPMSE Lux Contracts With**

The Hongkong and Shanghai Banking Corporation Limited

**Cash Correspondent (Securities Related Activity)**

The Hongkong and Shanghai Banking Corporation Limited – Philippine Branch

\*J.P. MORGAN AFFILIATE

† CLIENTS SHOULD REFER TO THEIR ISSUED SETTLEMENT INSTRUCTIONS

CASH CORRESPONDENT (SECURITIES RELATED ACTIVITY) ARE LISTED FOR INFORMATION ONLY



## Poland

Market Added **1993**

### Service Provider

Bank Handlowy w. Warszawie S.A.

### Service Provider Since

1993

### JPMSE Lux Contracts With

Bank Handlowy w. Warszawie S.A.

### Cash Correspondent (Securities Related Activity)

mBank S.A.

## Portugal

Market Added **1985**

### Service Provider

BNP Paribas SA

### Service Provider Since

2010

### JPMSE Lux Contracts With

BNP Paribas SA

### Cash Correspondent (Securities Related Activity)

J.P. Morgan SE\*

## Qatar

Market Added **2004**

### Service Provider

HSBC Bank Middle East Limited (Qatar Branch)

### Service Provider Since

2004

### JPMSE Lux Contracts With

The Hongkong and Shanghai Banking Corporation Limited

### Cash Correspondent (Securities Related Activity)

The Commercial Bank (P.Q.S.C.)

## Romania

Market Added **1997**

### Service Provider

Citibank Europe plc, Dublin – Romania Branch

### Service Provider Since

2014

### JPMSE Lux Contracts With

Citibank Europe plc, Dublin – Romania Branch

### Cash Correspondent (Securities Related Activity)

ING Bank N.V.

\*J.P. MORGAN AFFILIATE

† CLIENTS SHOULD REFER TO THEIR ISSUED SETTLEMENT INSTRUCTIONS

CASH CORRESPONDENT (SECURITIES RELATED ACTIVITY) ARE LISTED FOR INFORMATION ONLY

## Russia

Market Added **1995****Service Provider**

Commercial Bank J.P. Morgan Bank International (Limited Liability Company)\*

**Service Provider Since**

1995

**JPMSE Lux Contracts With**

Commercial Bank J.P. Morgan Bank International (Limited Liability Company)\*

**Cash Correspondent (Securities Related Activity)**

Commercial Bank J.P. Morgan Bank International (Limited Liability Company)\* (RUB)

JPMorgan Chase Bank, National Association\* (USD)

## Saudi Arabia

Market Added **2006****Service Provider**

J.P. Morgan Saudi Arabia Company\*

**Service Provider Since**

2018

**JPMSE Lux Contracts With**

J.P. Morgan Saudi Arabia Company\*

**Cash Correspondent (Securities Related Activity)**

JPMorgan Chase Bank, N.A. - Riyadh Branch\*

## Serbia

Market Added **2005****Service Provider**

UniCredit Bank Serbia JSC Belgrade

**Service Provider Since**

2005

**JPMSE Lux Contracts With**

UniCredit Bank Serbia JSC Belgrade

**Cash Correspondent (Securities Related Activity)**

UniCredit Bank Serbia JSC Belgrade

## Singapore

Market Added **1974****Service Provider**

DBS Bank Ltd

**Service Provider Since**

2006

**JPMSE Lux Contracts With**

DBS Bank Ltd

**Cash Correspondent (Securities Related Activity)**

Oversea-Chinese Banking Corporation

\*J.P. MORGAN AFFILIATE

† CLIENTS SHOULD REFER TO THEIR ISSUED SETTLEMENT INSTRUCTIONS

CASH CORRESPONDENT (SECURITIES RELATED ACTIVITY) ARE LISTED FOR INFORMATION ONLY

## Slovak Republic

Market Added **1995**
**Service Provider**

UniCredit Bank Czech Republic and Slovakia, a.s. Pobočka Zahranicnej Banky

**Service Provider Since**

2003

**JPMSE Lux Contracts With**

UniCredit Bank Czech Republic and Slovakia, a.s. Pobočka Zahranicnej Banky

**Cash Correspondent (Securities Related Activity)**

J.P. Morgan SE\*

## Slovenia

Market Added **1997**
**Service Provider**

UniCredit Banka Slovenija d.d.

**Service Provider Since**

1997

**JPMSE Lux Contracts With**

UniCredit Banka Slovenija d.d.

**Cash Correspondent (Securities Related Activity)**

J.P. Morgan SE\*

## South Africa

Market Added **1993**
**Service Provider**

FirstRand Bank Limited

**Service Provider Since**

2006

**JPMSE Lux Contracts With**

FirstRand Bank Limited

**Cash Correspondent (Securities Related Activity)**

The Standard Bank of South Africa Limited

## South Korea

Market Added **1992**
**Service Provider**
Standard Chartered Bank Korea Limited<sup>†</sup>Kookmin Bank Co., Ltd.<sup>†</sup>
**Service Provider Since**

1992

2015

**JPMSE Lux Contracts With**
Standard Chartered Bank Korea Limited<sup>†</sup>Kookmin Bank Co., Ltd.<sup>†</sup>
**Cash Correspondent (Securities Related Activity)**
Standard Chartered Bank Korea Limited<sup>†</sup>Kookmin Bank Co., Ltd.<sup>†</sup>

\*J.P. MORGAN AFFILIATE

† CLIENTS SHOULD REFER TO THEIR ISSUED SETTLEMENT INSTRUCTIONS

CASH CORRESPONDENT (SECURITIES RELATED ACTIVITY) ARE LISTED FOR INFORMATION ONLY

## Spain

Market Added **1974**
**Service Provider**

CACEIS Bank Spain, S.A.U.

**Service Provider Since**

2002

**JPMSE Lux Contracts With**

CACEIS Bank Spain, S.A.U.

**Cash Correspondent (Securities Related Activity)**

J.P. Morgan SE\*

## Sri Lanka

Market Added **1991**
**Service Provider**

The Hongkong and Shanghai Banking Corporation Limited (Sri Lanka Branch)

**Service Provider Since**

1991

**JPMSE Lux Contracts With**

The Hongkong and Shanghai Banking Corporation Limited

**Cash Correspondent (Securities Related Activity)**

The Hongkong and Shanghai Banking Corporation Limited (Sri Lanka Branch)

## Sweden

Market Added **1978**
**Service Provider**

Skandinaviska Enskilda Banken AB (publ)

**Service Provider Since**

2021

**JPMSE Lux Contracts With**

Skandinaviska Enskilda Banken AB (publ)

**Cash Correspondent (Securities Related Activity)**

Nordea Bank Abp, Sweden

## Switzerland

Market Added **1978**
**Service Provider**
UBS Switzerland AG<sup>†</sup>Direct participant of the CSD<sup>†</sup>
**Service Provider Since**

1978

N/A

**JPMSE Lux Contracts With**
UBS Switzerland AG<sup>†</sup>JPMSE Lux\* is a direct participant of the CSD<sup>†</sup>
**Cash Correspondent (Securities Related Activity)**

UBS Switzerland AG

\*J.P. MORGAN AFFILIATE

† CLIENTS SHOULD REFER TO THEIR ISSUED SETTLEMENT INSTRUCTIONS

CASH CORRESPONDENT (SECURITIES RELATED ACTIVITY) ARE LISTED FOR INFORMATION ONLY

## Taiwan

Market Added **1991**

### Service Provider

JPMorgan Chase Bank, N.A. – Taipei Branch\*

### Service Provider Since

1991

### JPMSE Lux Contracts With

JPMorgan Chase Bank, N.A. – Taipei Branch\*

### Cash Correspondent (Securities Related Activity)

JPMorgan Chase Bank, N.A. – Taipei Branch\*

## Tanzania

Market Added **2012***Clients may be required to upgrade certain clauses in their existing agreement prior to entry*

### Service Provider

Stanbic Bank Tanzania Limited

### Service Provider Since

2012

### JPMSE Lux Contracts With

Stanbic Bank Tanzania Limited

### Cash Correspondent (Securities Related Activity)

Stanbic Bank Tanzania Limited

## Thailand

Market Added **1984**

### Service Provider

Standard Chartered Bank (Thai) Public Company Limited

### Service Provider Since

1990

### JPMSE Lux Contracts With

Standard Chartered Bank

### Cash Correspondent (Securities Related Activity)

Standard Chartered Bank (Thai) Public Company Limited

## Tunisia

Market Added **1993**

### Service Provider

Union Internationale de Banques

### Service Provider Since

2019

### JPMSE Lux Contracts With

Union Internationale de Banques

### Cash Correspondent (Securities Related Activity)

Banque Internationale Arabe de Tunisie S.A.

\*J.P. MORGAN AFFILIATE

† CLIENTS SHOULD REFER TO THEIR ISSUED SETTLEMENT INSTRUCTIONS

CASH CORRESPONDENT (SECURITIES RELATED ACTIVITY) ARE LISTED FOR INFORMATION ONLY



## Turkey

Market Added **1989**
**Service Provider**

Citibank A.S.

**Service Provider Since**

2003

**JPMSE Lux Contracts With**

Citibank A.S.

**Cash Correspondent (Securities Related Activity)**

JPMorgan Chase Bank, N.A. Istanbul Branch

## Uganda

Market Added **2010**
**Service Provider**

Standard Chartered Bank Uganda Ltd

**Service Provider Since**

2010

**JPMSE Lux Contracts With**

Standard Chartered Bank

**Cash Correspondent (Securities Related Activity)**

Standard Chartered Bank Uganda Ltd

## Ukraine

Market Added **1999**
*Restricted Service only. Please contact your Client Service Team for further information.*
**Service Provider**

Joint Stock Company "Citibank"

**Service Provider Since**

2014

**JPMSE Lux Contracts With**

Joint Stock Company "Citibank"

**Cash Correspondent (Securities Related Activity)**

JPMorgan Chase Bank, National Association\*

Joint Stock Company "Citibank"

## United Arab Emirates

Market Added **2001**
*DFM Exchange opened in 2001, NASDAQ Dubai was added in 2006 followed by ADX in 2007*
**Service Provider**

HSBC Bank Middle East Limited (United Arab Emirates Branch)

**Service Provider Since**

2001

**JPMSE Lux Contracts With**

The Hongkong and Shanghai Banking Corporation Limited

**Cash Correspondent (Securities Related Activity)**

First Abu Dhabi Bank P.J.S.C.

\*J.P. MORGAN AFFILIATE

† CLIENTS SHOULD REFER TO THEIR ISSUED SETTLEMENT INSTRUCTIONS

CASH CORRESPONDENT (SECURITIES RELATED ACTIVITY) ARE LISTED FOR INFORMATION ONLY

## United Kingdom

Market Added **1974**

### Service Provider

JPMorgan Chase Bank, National Association\*  
Deutsche Bank AG - London

### Service Provider Since

N/A  
2006

### JPMSE Lux Contracts With

JPMorgan Chase Bank, National Association\* *(which is a direct participant of the CSD)*  
Deutsche Bank AG - London *(which in turn appoints Deutsche Bank AG – London; for Physical Certificates of Deposit only)*

### Cash Correspondent (Securities Related Activity)

JPMorgan Chase Bank, N.A. - London Branch\*

## United States

Market Added **N/A**

### Service Provider

JPMorgan Chase Bank, National Association\*

### Service Provider Since

N/A

### JPMSE Lux Contracts With

JPMorgan Chase Bank, National Association\*

### Cash Correspondent (Securities Related Activity)

JPMorgan Chase Bank, National Association\*

## Uruguay

Market Added **1992**

### Service Provider

Banco Itaú Uruguay S.A.

### Service Provider Since

1993

### JPMSE Lux Contracts With

Banco Itaú Uruguay S.A.

### Cash Correspondent (Securities Related Activity)

Banco Itaú Uruguay S.A.

## Vietnam

Market Added **2001**

### Service Provider

HSBC Bank (Vietnam) Ltd.

### Service Provider Since

2001

### JPMSE Lux Contracts With

The Hongkong and Shanghai Banking Corporation Limited

### Cash Correspondent (Securities Related Activity)

HSBC Bank (Vietnam) Ltd.

\*J.P. MORGAN AFFILIATE

† CLIENTS SHOULD REFER TO THEIR ISSUED SETTLEMENT INSTRUCTIONS

CASH CORRESPONDENT (SECURITIES RELATED ACTIVITY) ARE LISTED FOR INFORMATION ONLY

**WAEMU** (Ivory Coast, Benin, Burkina Faso, Guinea Bissau,  
Mali, Niger, Senegal and Togo)Market Added **1996***Clients may be required to upgrade certain clauses in their existing agreement prior to entry***Service Provider**

Standard Chartered Bank Côte d'Ivoire S.A.

**Service Provider Since**

2012

**JPMSE Lux Contracts With**

Standard Chartered Bank

**Cash Correspondent (Securities Related Activity)**

Standard Chartered Bank Côte d'Ivoire S.A.

**Zambia**Market Added **1994****Service Provider**

Standard Chartered Bank Zambia Plc

**Service Provider Since**

2010

**JPMSE Lux Contracts With**

Standard Chartered Bank

**Cash Correspondent (Securities Related Activity)**

Standard Chartered Bank Zambia Plc

**Zimbabwe**Market Added **1994***Clients may be required to upgrade certain clauses in their existing agreement prior to entry***Service Provider**

Stanbic Bank Zimbabwe Limited

**Service Provider Since**

2012

**JPMSE Lux Contracts With**

The Standard Bank of South Africa Ltd.

**Cash Correspondent (Securities Related Activity)**

Stanbic Bank Zimbabwe Limited

\*J.P. MORGAN AFFILIATE

† CLIENTS SHOULD REFER TO THEIR ISSUED SETTLEMENT INSTRUCTIONS

CASH CORRESPONDENT (SECURITIES RELATED ACTIVITY) ARE LISTED FOR INFORMATION ONLY

## International Central Securities Depositories

JPMSE Lux uses Euroclear Bank S.A./N.V. (Euroclear) and Clearstream Banking Luxembourg S.A. (Clearstream) in their capacity as International Securities Depositories (ICSDs). Where clients elect to settle transactions through Euroclear or Clearstream, clients are directed to the Security Depository provisions laid out in their Global Custody Agreement(s). Accounts at the ICSD are held in the name of JPMorgan Chase Bank, National Association.

Additionally, clients may refer to the “ICSD Service Guide” within the Investor Publications section of Market Intelligence for more details on J.P. Morgan’s Global Custody product offering for the settlement and safekeeping of assets at Euroclear and Clearstream.

*This document is for information only and its contents are subject to change. This document is not intended to influence your investment decisions nor to amend or supplement any agreement governing your relations with affiliates and/or subsidiaries of JPMorgan Chase & Co. and any of their respective officers, directors, employees, agents or advisers. This document may not be reproduced, redistributed or transmitted, in whole or in part, without J.P. Morgan’s written consent. Any unauthorized distribution or use is strictly prohibited. J.P. Morgan has gathered the information from a source it considers reliable, however, it cannot be responsible for inaccuracies, incomplete information or updating of the information furnished hereby. J.P. Morgan assumes no responsibility or liability whatsoever to any person in respect of such matters.*

*Links to other websites may be included herein and J.P. Morgan is not responsible for any such linked content, which is provided for your convenience only and not as an endorsement of any kind.*

*J.P. Morgan is a marketing name for businesses of JPMorgan Chase & Co. and its subsidiaries and affiliates worldwide. The material is produced and may be distributed on behalf of the entities offering Corporate and Investment Banking activities including but not limited to JPMorgan Chase Bank, N.A. (including through its authorized branches), J.P. Morgan SE (including through its authorized branches), J.P. Morgan (Suisse) SA and J.P. Morgan Europe Limited.*

*For additional regulatory disclosures regarding these entities, please consult: [www.jpmorgan.com/disclosures](http://www.jpmorgan.com/disclosures).*

*© 2023 JPMorgan Chase & Co. All rights reserved.*

**\*J.P. MORGAN AFFILIATE**

**† CLIENTS SHOULD REFER TO THEIR ISSUED SETTLEMENT INSTRUCTIONS**

**CASH CORRESPONDENT (SECURITIES RELATED ACTIVITY) ARE LISTED FOR INFORMATION ONLY**

**LAST UPDATED – AUGUST 22, 2023**